

## DPR\_2020\_vegzett\_ENG\_MÉK

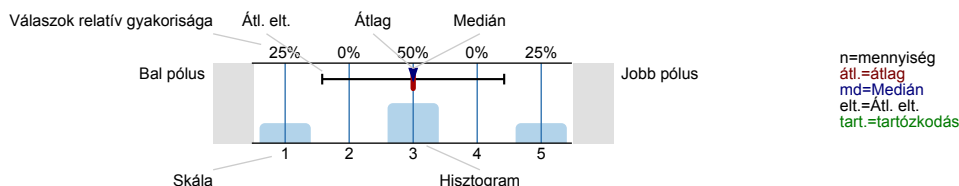
Válaszadók száma = 7



## Felmérés eredmények

## Jelmagyarázat

Kérdésszöveg



## 1. General questions

1.1) Sex:

male	<input type="text"/>	57.1%	n=7
female	<input type="text"/>	42.9%	

1.2) Which faculty of UD were you studying at? (If you were doing more than one training programme simultaneously, choose the one you found the most important.)

Faculty of Agricultural and Food Sciences and Environmental Management	<input type="text"/>	100%	n=7
--	----------------------	------	-----

1.3) What was the field of study of your major(s)? (If you were doing more than one training programme simultaneously, choose the one you found the most important.)

Agriculture	<input type="text"/>	100%	n=7
-------------	----------------------	------	-----

1.4) What is the level of your training programme?

Bachelor programme (BA/BSc)	<input type="text"/>	0%	n=7
Master programme (MA/MSc)	<input type="text"/>	100%	
Medical degree programme (Medicine, Dentistry, Pharmacy)	<input type="text"/>	0%	
Doctoral programme (PhD/DLA)	<input type="text"/>	0%	

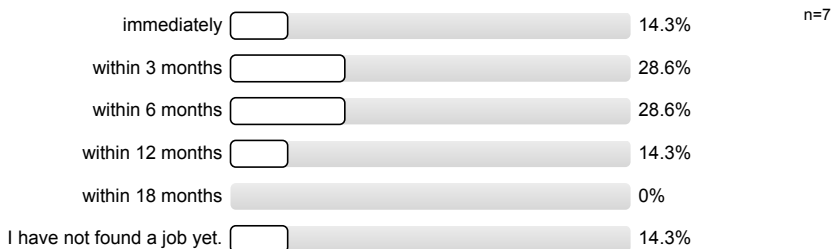
1.5) In which year did you finish your studies?

2015	<input type="text"/>	42.9%	n=7
2019	<input type="text"/>	57.1%	

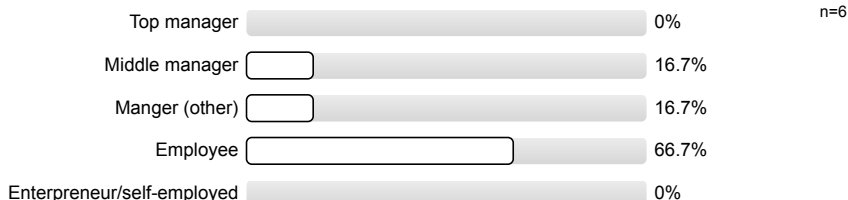
1.6) After finishing your studies you...

continued studying	<input type="text"/>	42.9%	n=7
started to work	<input type="text"/>	57.1%	
worked and continued studying simultaneously	<input type="text"/>	0%	

1.7) After graduating from UD, how long did it take you to secure your first paying job?



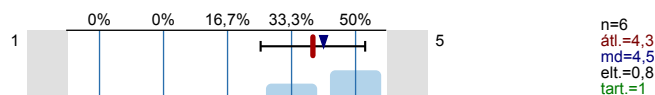
1.8) In what position do you work at your present/last company? (If you had more than one, please indicate the last one.)



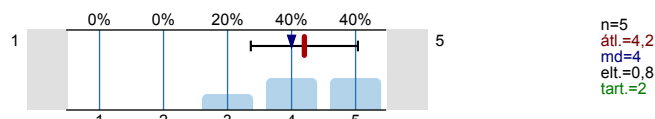
2. Development of work-related competencies

Please rate the extent to which your education at UD contributed to the development of the following competencies? (1=not at all; 3=to some extent, 5=to a great extent; 0=no opinion)

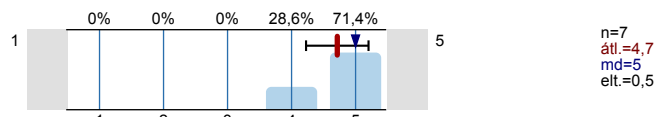
2.1) Proactive problem solving



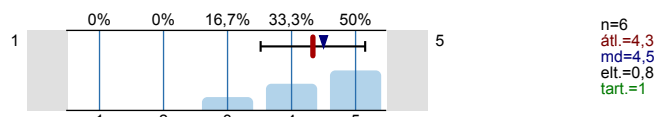
2.2) Aim for perfection



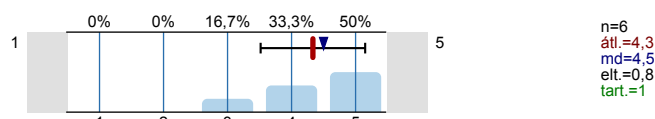
2.3) Teamwork



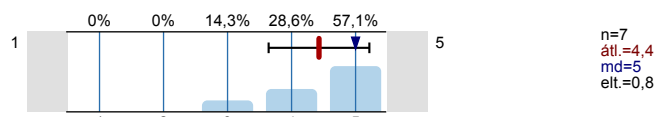
2.4) Persistence



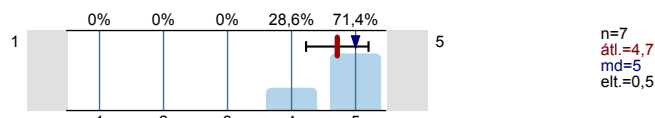
2.5) Ambition



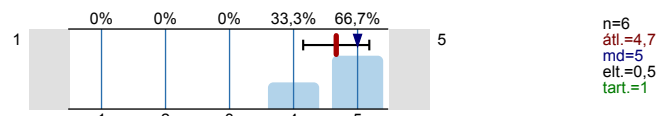
2.6) Communication skills



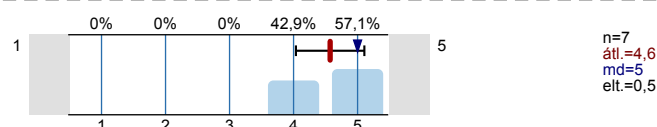
2.7) Self-confidence



## 2.8) Thirst for knowledge



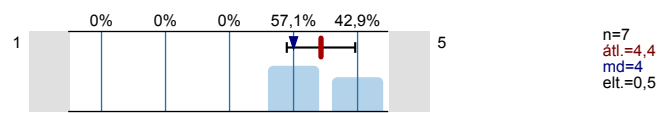
## 2.9) Organisation skills



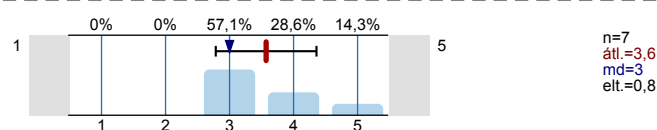
## 3. Satisfaction with the development of skills and knowledge

Please rate how satisfied you are with the development of the following skills and knowledge at your faculty. (1= not satisfied at all; 2=not satisfied; 3=somewhat satisfied; 4=satisfied; 5 = absolutely satisfied; 0=no opinion)

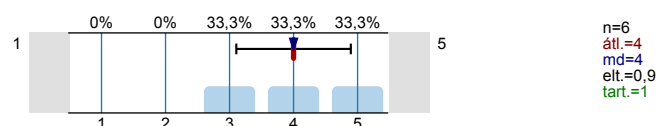
## 3.1) theoretical proficiency



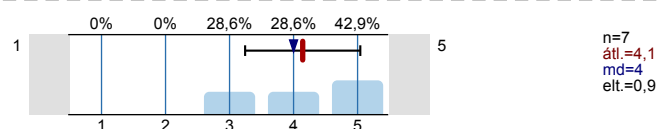
## 3.2) practical proficiency



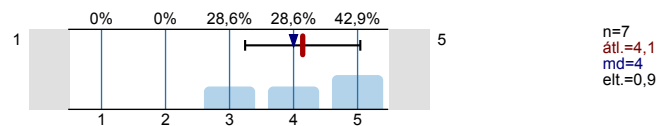
## 3.3) computer skills



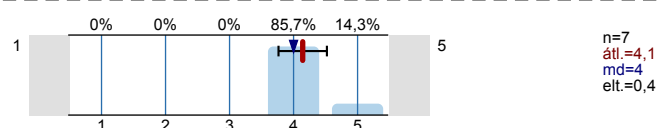
## 3.4) language development



## 3.5) usefulness of knowledge gained at the university



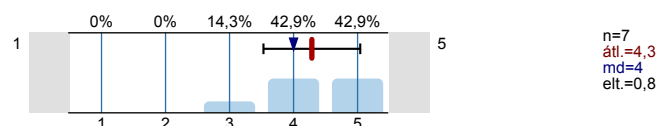
## 3.6) (overall) quality of education



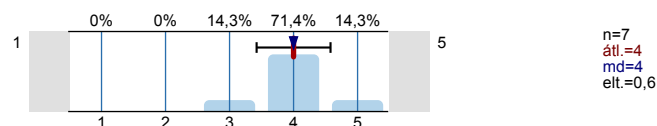
## 4. Infrastructure

Please rate how satisfied you are with the following things. (1= not satisfied at all; 2=not satisfied; 3=somewhat satisfied; 4=rather satisfied; 5 = absolutely satisfied; 0=no opinion)

## 4.1) equipment and facilities of education



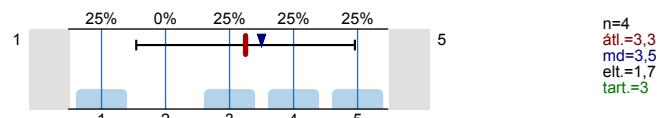
## 4.2) appearance and physical conditions of buildings



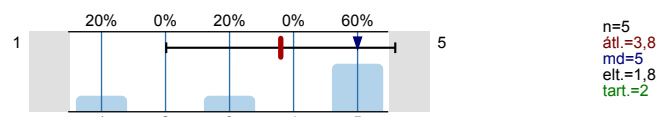
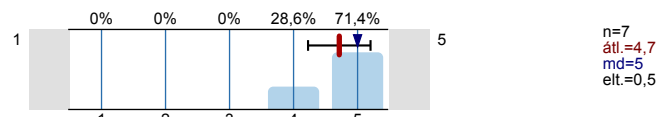
## 5. Services

Please rate how satisfied you are with the following services. (1= not satisfied at all; 2=not satisfied; 3=somewhat satisfied; 4= rather satisfied; 5 = absolutely satisfied; 0=no opinion)

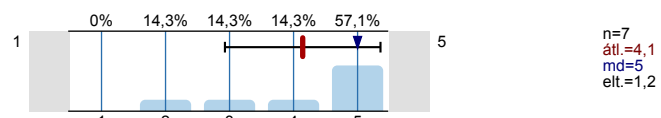
## 5.1) Dorm-related services



## 5.2) Sports-related services

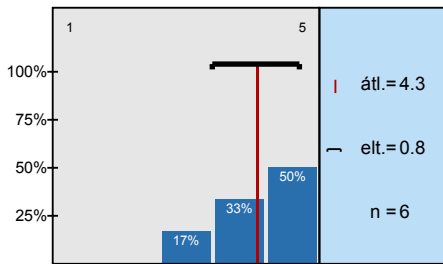
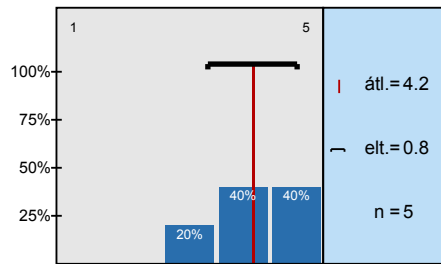
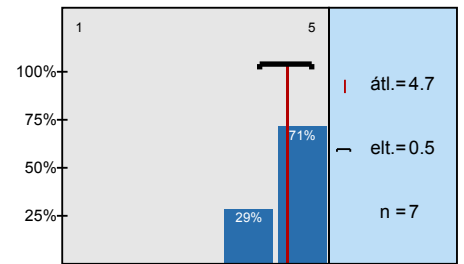
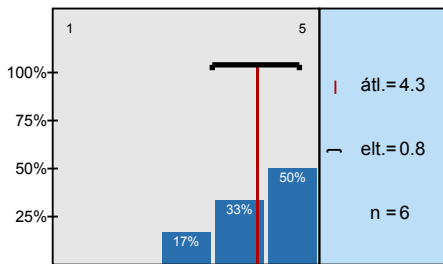
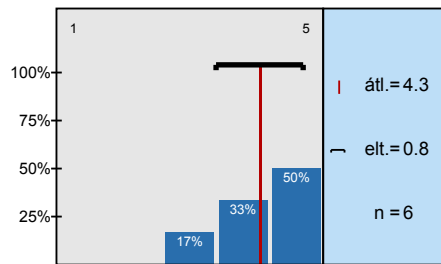
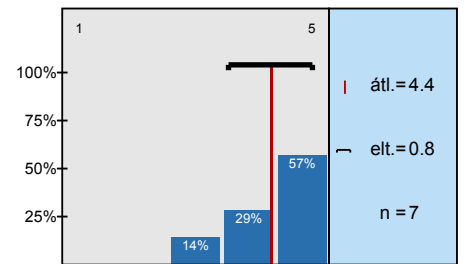
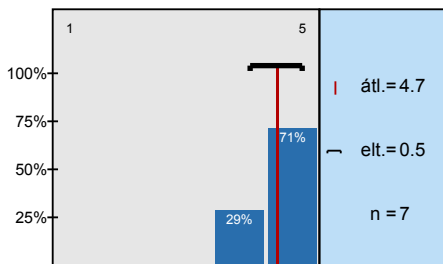
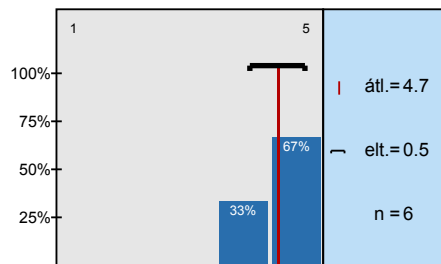
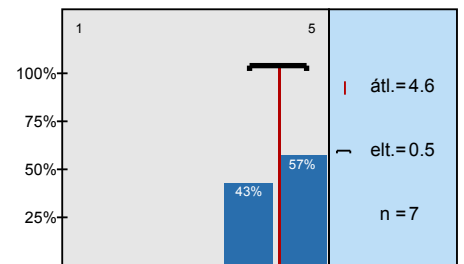
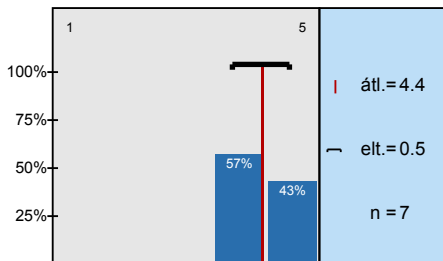
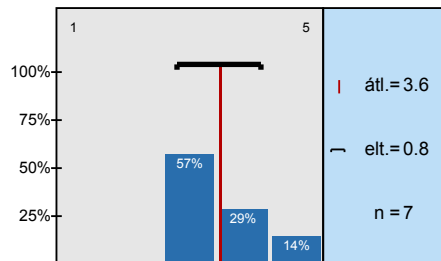
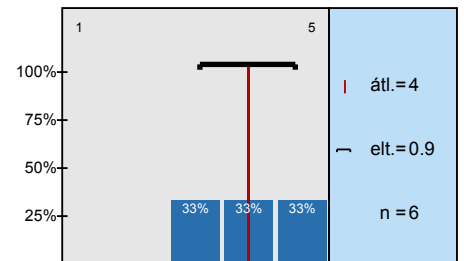
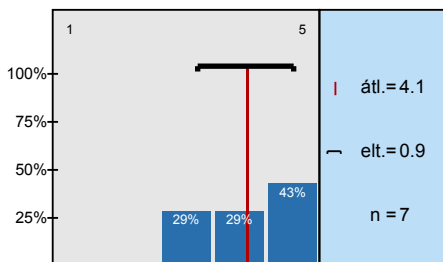
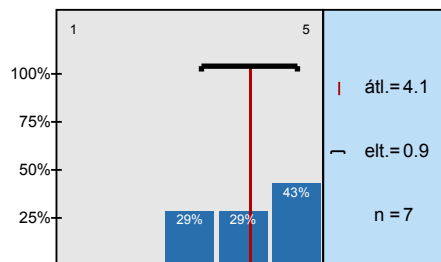
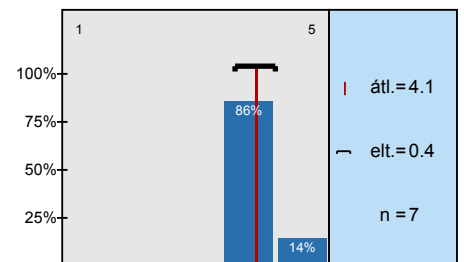
5.3) Student Service Centre/ Education Office/  
International Office/Coordinating Centre for  
International Education

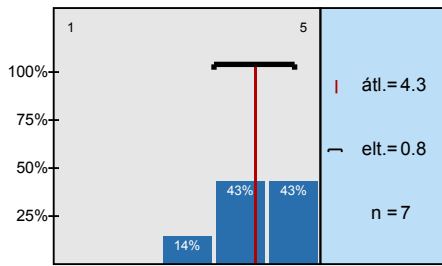
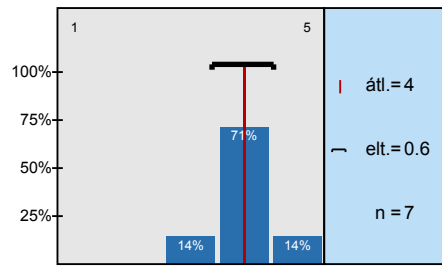
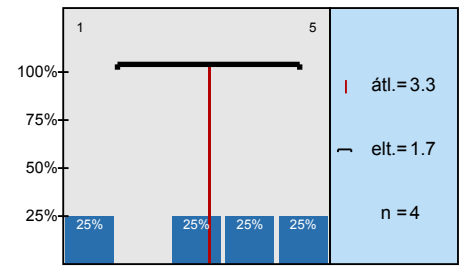
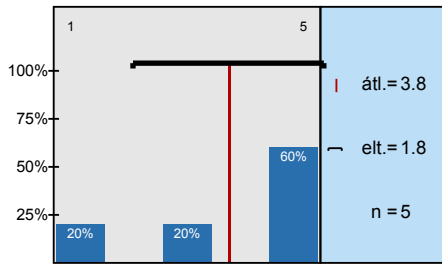
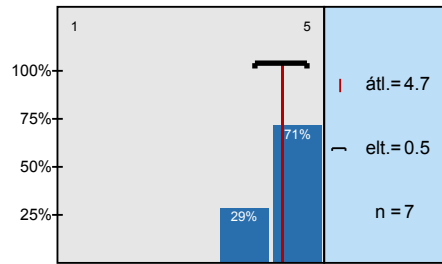
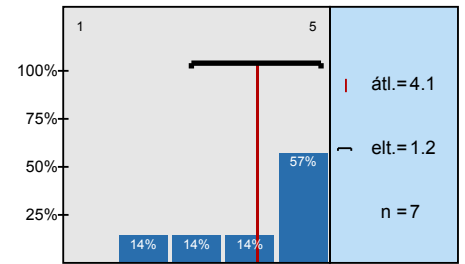
## 5.4) Department/Institute Administration



Thank you for completing our survey! You can submit your answers by clicking on "Send."  
 Saving your data may take a few seconds depending on Internet speed. Please wait for the message verifying that your data is saved.

# Hisztogram skálázott kérdésekhez

**Proactive problem solving**

**Aim for perfection**

**Teamwork**

**Persistence**

**Ambition**

**Communication skills**

**Self-confidence**

**Thirst for knowledge**

**Organisation skills**

**theoretical proficiency**

**practical proficiency**

**computer skills**

**language development**

**usefulness of knowledge gained at the university**

**(overall) quality of education**


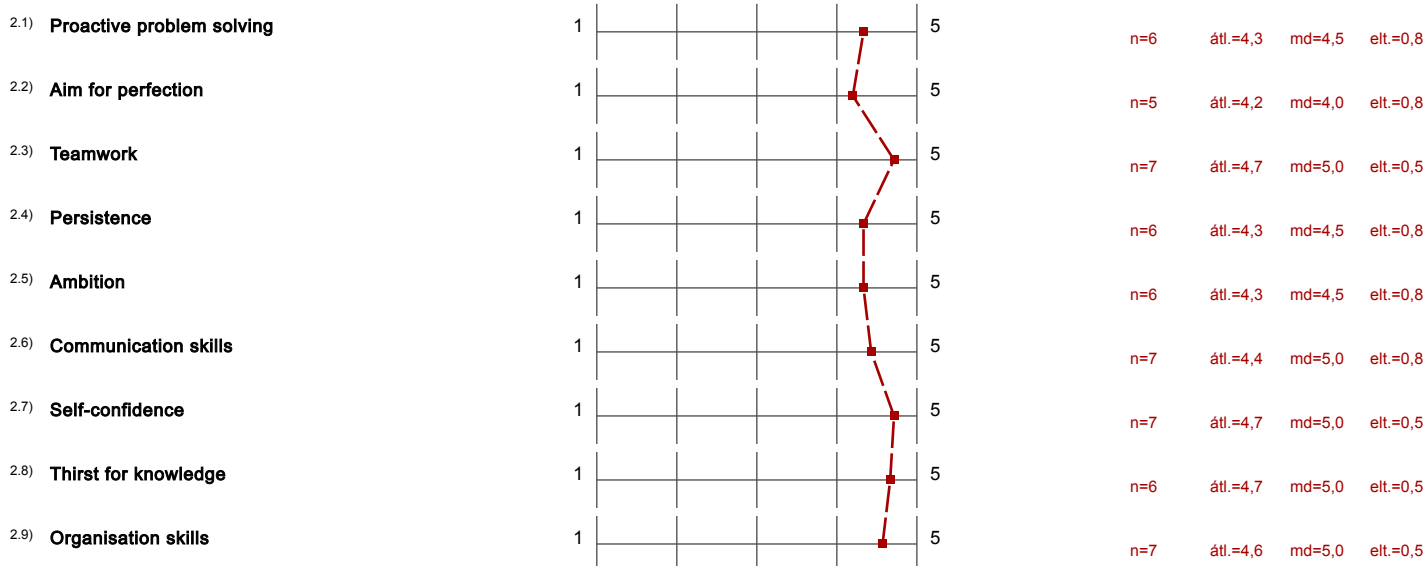
**equipment and facilities of education****appearance and physical conditions of buildings****Dorm-related services****Sports-related services****Student Service Centre/ Education Office/ International Office/Coordinating Centre for****Department/Institute Administration**

# Profil

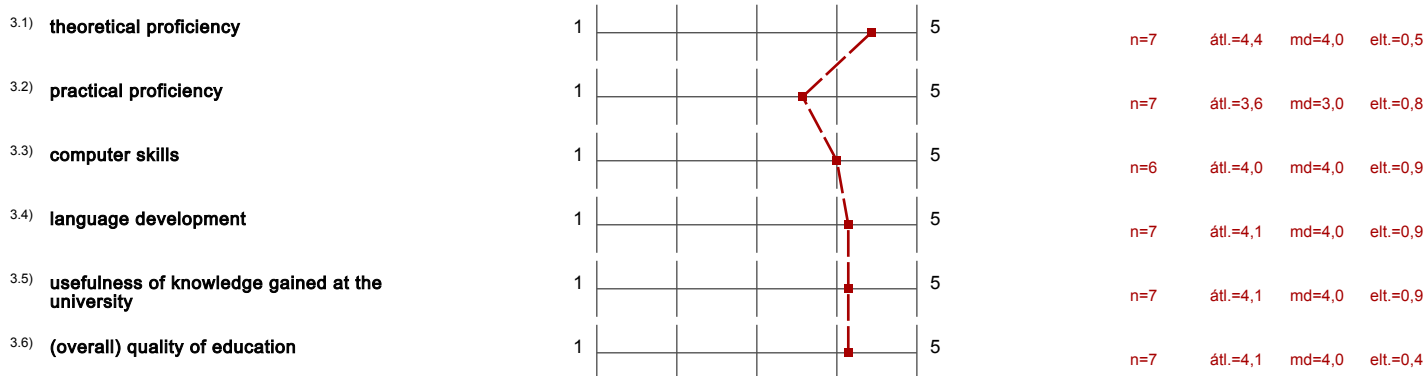
Alcsoport: DPR\_2020\_vegzett\_ENG\_MÉK

A profilvonalban használt értékek Átlag

## 2. Development of work-related competencies



## 3. Satisfaction with the development of skills and knowledge



## 4. Infrastructure



## 5. Services



5.2) <b>Sports-related services</b>	1									5	n=5	átl.=3,8	md=5,0	elt.=1,8
5.3) <b>Student Service Centre/ Education Office/ International Office/Coordinating Centre for International Education</b>	1									5	n=7	átl.=4,7	md=5,0	elt.=0,5
5.4) <b>Department/Institute Administration</b>	1									5	n=7	átl.=4,1	md=5,0	elt.=1,2